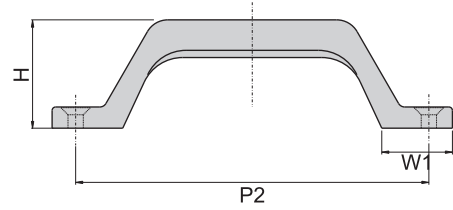
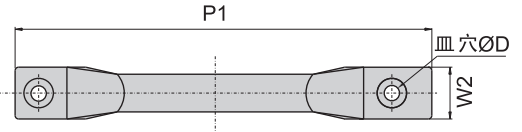


CKA-1080-1 CKA-1080-2 CKA-1080-3 CKA-1080-4



材 质	不锈钢(SUS 304)
表面处理	镜面研磨

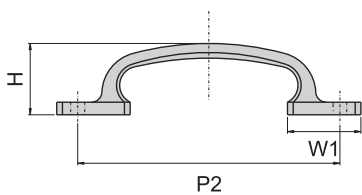
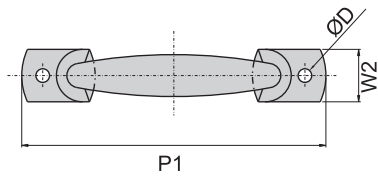
产品型号	P1	P2	W1	W2	H	ØD
CKA-1080-1	220	200	30	22	46	M6
CKA-1080-2	170	150	30	22	46	M6
CKA-1080-3	116	100	23	18	32	M4
CKA-1080-4	96	96	96	18	32	M4

拉手取手

CKA-1068-1

CKA-1068-2

CKA-1068-3



产品型号	P1	P2	W1	W2	H	ØD
CKA-1068-1	145	125	35	25	34	6.5
CKA-1068-2	130	115	30	22	33	5.5
CKA-1068-3	120	105	29	20	30	5.5

材 质	不锈钢(SUS 304)
表面处理	镜面研磨